



# LBT1: Closures to All Buildings and Parking Restrictions

**Saturday, July 19, 2025 - Sunday, July 20, 2025**  
**9:00 a.m. - 1:00 p.m. each day**

LBT is replacing a critical component of the site's emergency power system at LBT1. This electrical work will prompt electrical outages and all facilities will be closed for use from 9:00 a.m. to 1:00 p.m. each day on Saturday, July 19, and Sunday, July 20, 2025.

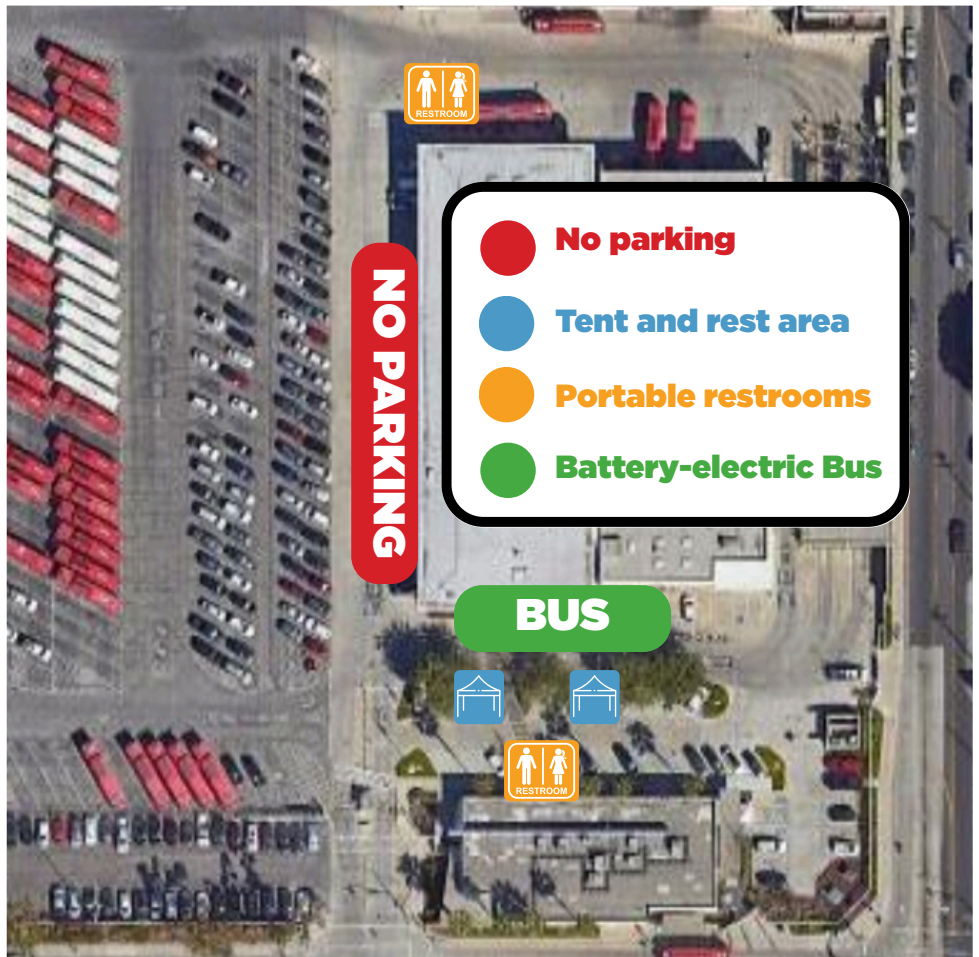
**Employees must exit all buildings by 9:00 a.m. each day.**

Once the work is complete for that day at around 1:00 p.m., employees will be advised when they can return to work and break areas inside the buildings.

During the closure temporary areas will be available for employees including:

- Restrooms
- Rest area: tent and tables/chairs
- BEB to provide air conditioning

**Please note: that some parking spots will be impacted. See the map for no parking areas and the temporary rest areas.**



## QUESTIONS?

If you have questions regarding this project, please contact Luis Montalvo, Project Engineer, Facilities and Infrastructure, at [lmontalvo@lbtransit.com](mailto:lmontalvo@lbtransit.com) or 562.599.8559.